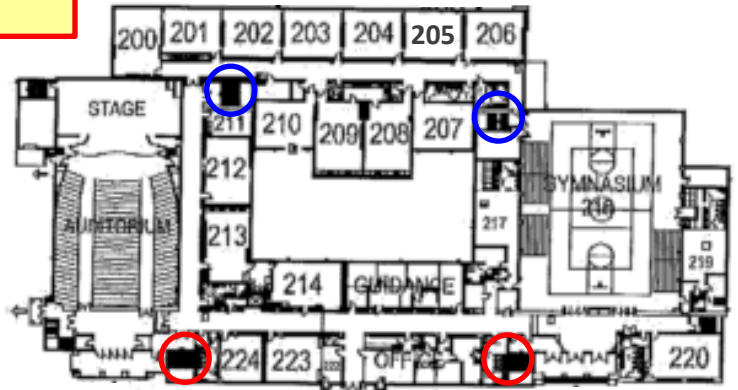


MAP OF BURLEY MIDDLE SCHOOL

MAIN LEVEL:



○ = Stairwells to/from the bottom level to the middle (main) level to the upper level.

○ = Stairwells to/from the bottom level and the middle (main) level.

MAIN ENTRANCE

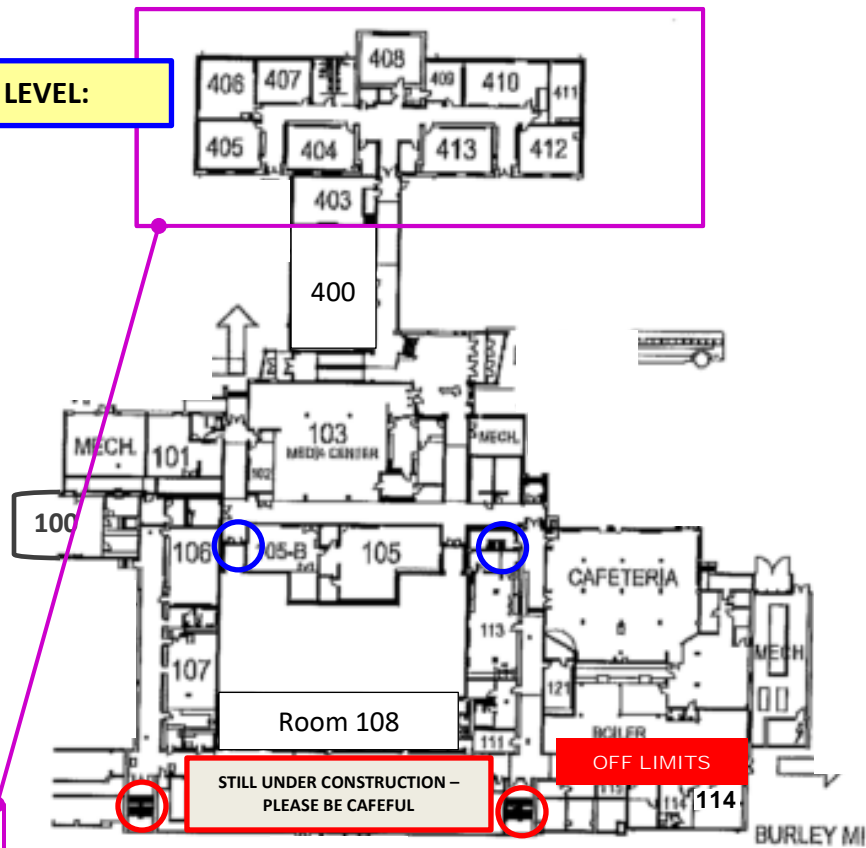
Main Level:

- Main Office
- Counseling
- Gym
- Auditorium
- Some 8th Grade Rooms
- Most 7th Grade Rooms

Lower Level:

- Cafeteria
- HPE Fitness Room (114)
- Performing Arts (100, 106, 107)
- Technology (105 & 105B)
- Visual Arts (113)
- Clinic
- Media Center
- CBIP Program (101 & 102)
- Gifted Resource (400)
- Most 6th Grade Classrooms (403 – 413)
- Room 108 will NOT be available to see on 8/20.

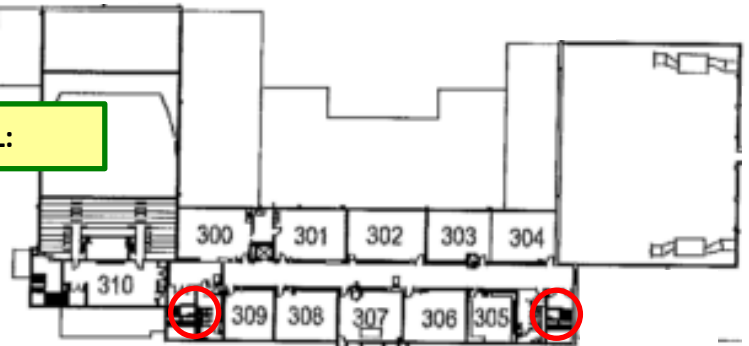
LOWER LEVEL:



Upper Level:

- French & Core + Math (310)
- Spanish (308)
- AVID (301)
- Core + Reading (300)
- Other 8th Grade Classrooms

UPPER LEVEL:



TEACHER	SUBJECT	ROOM
Andrews	Social Studies	212/200
Baker	Language Arts	413
Bannister	Special Services	407
Barber	Science	213
Black	Math	307
Budziszewski	Social Studies	*
Cassell	Health & PE	GYM
Cooke	Science	208
Currier	Math	406
Daughtrey	Language Arts	223
Davis	Math	408
Edgerton	Math	304
Ellen	Language Arts	205
Escobar	Strings	106
Fiddner	Math	405
Gallagher	Math	302
Goldsmith	ESOL	204
Goode	Core + Reading	300
Harley	Language Arts	410
Jennings	Chorus	107
Kruger	Math	212
LaPrade	Band	100
Leong	AVID / Comp Sci	301
Lewis	ESOL	204

TEACHER	SUBJECT	ROOM
Linville	Language Arts	201
Lowe	Language Arts	412
Mangiaracina	Math	203
McKinley	Art	113
Mullinex	Science	*
Newman	Special Services	207
Nystrom	Math	306
O'Leary	Social Studies	214
Pearman	Special Services	305
Poole	Spanish	308
Scofield	Language Arts	200
Scott	Special Services	404
Shedd	Social Studies	403
Siebert	Health & PE	GYM
Smith, Mr.	Special Services	301
Smith, Ms.	French	300/106
Spencer	Social Studies	206
Steigman	Language Arts	202
Walker	Special Services	210
Weed	Science	209
Whelan	CTE	105
Williams	Special Services	101
Worozbyt	Gifted	400
Zentgraf	Health & PE	GYM

Ms. Craddock is in the Media Center (103)

*Mr. Mullinex's and Ms. Budziszewski's classes will eventually be in 108 – which is currently still under construction. Therefore, they will be in Room 400 – provided we do, in fact, have that construction area returned to us by Monday evening. If for some reason, the Room 400 is not available, then Mr. Mullinex and Ms. Budziszewski will be in the Media Center.